

Office to let

MUSE

Bucharest, Sector 1, 2 Meneuțului St.



Building information

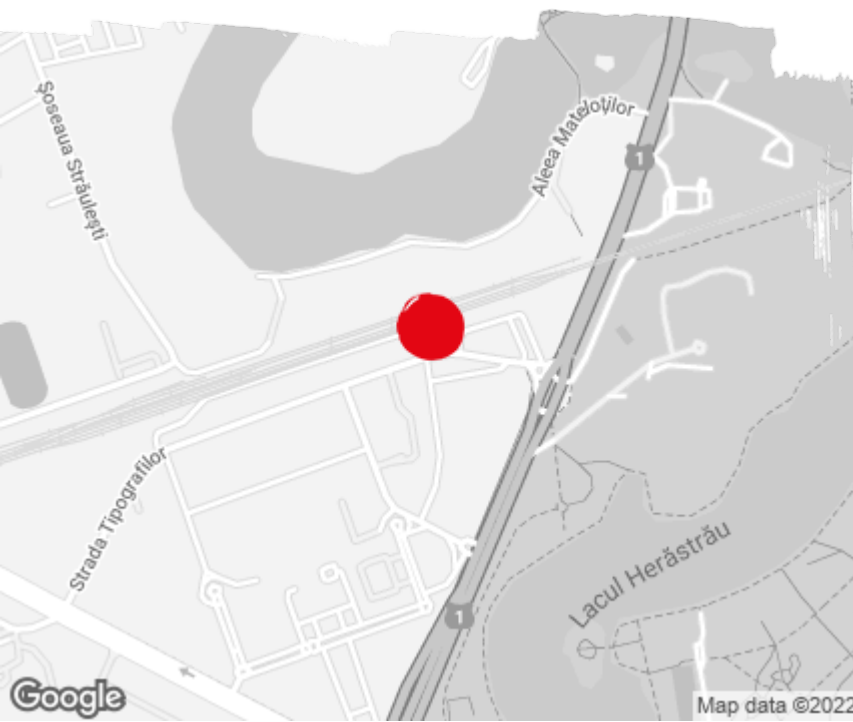
Building status	Existing
Year of construction	2023
Parking ratio	1 / 45 sq m
Total building area	7 000 sq m

Commercial terms

Office space*	after login *
Parking	after login *
Service charge*	after login *
Minimum lease term	after login *
Availability	after login *

* Asking terms for m²/month

Location



Available space

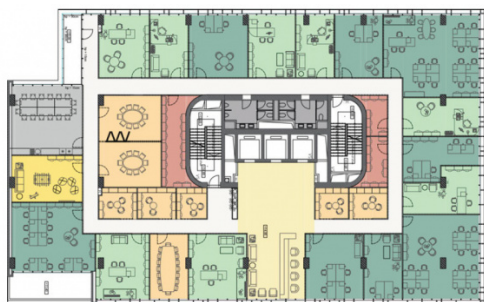
550 sq m

Available office space

550 sq m

Minimum office space

Typical floor plan



Available space

Floor	Vacant space	Availability
1	please contact us *	please contact us *
Total	after login *	

Public transport

Metro: -

Bus: 131, 203, 205, 261, 335, 361, 403, 441, 442, 443, 444, 446

Tram: 41

Contact



+40 21 302 3400

More information